

CONSTRUCTION DE 10
MAISONS JUMEELES A REMIRE
type T3, T4

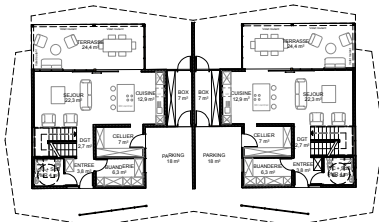


VUE DEPUIS LA ROUTE

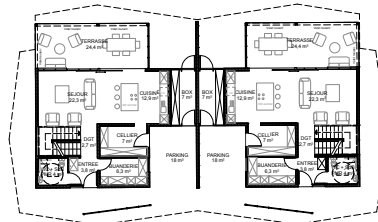
Maitre d'ouvrage: DID Guyane
Lieu: Remire Montjoly (Guyane)
Surface de Plancher: 1243 m2
Coût: 4,4M€
Mission: Concours (non retenu)
Cotraitants: ABACUS STUDIO,
BETEG, ATTA



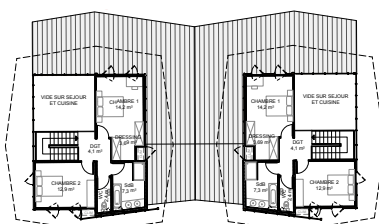
AERIEENNE



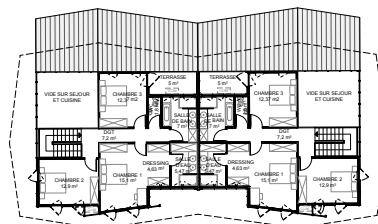
PLAN T3 RDC - Ech. 1/200



PLAN T4 RDC - Ech. 1/200



PLAN T3 R+1 - Ech. 1/200



PLAN T4 R+1 - Ech. 1/200

PLANS



VUE INTERIEURE